

INTRODUCING KALWALL® 175CW - THE FIRST OF OUR NEW TRANSLUCENT INSULATED GLAZING UNITS

KALWALL®

high performance translucent building systems

KALWALL® 175CW is the first in a series of new translucent insulated glazing units (TIGUs) which allows you to mix and match Kalwall with other infill glazings and claddings for limitless façade design possibilities - without sacrificing performance.

KALWALL 175CW TIGUs are nominally 1-3/4" (44mm) and fully thermally broken. Daylight your building with Kalwall installed in the curtain wall system of your choosing and enjoy unparalleled versatility, durability and performance that outperforms conventional vision glazing in almost every way.

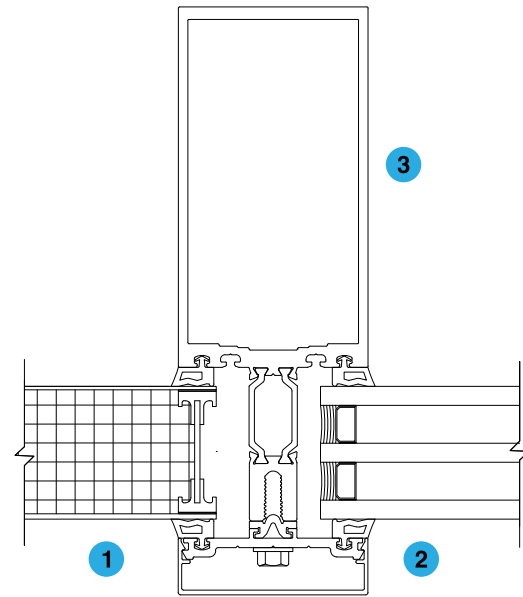
HIGH-PERFORMANCE GLAZING LIKE NO OTHER

KALWALL® 175CW was specifically developed for seamless compatibility with third-party curtain wall systems. While all Kalwall panels offer best-in-industry thermal performance and solar heat gain control, KALWALL 175CW offers high-performance glazing unlike anything in the industry. It allows you to:

- Create perfectly bright, comfortable spaces without sacrificing daylight autonomy.
- Mix and match Kalwall 175CW with double- or triple-glazed units, spandrels and other claddings for the best of both worlds. Plug and play wherever you need to daylight with confidence.
- TIGUs offer privacy/modesty and are bird-friendly.
- Eliminate the need for secondary control systems.
- Low maintenance panels are graffiti and vandal resistant.

Kalwall 175CW panels are available in both 1-way and 2-way grid patterns, orthogonal (90 degree) only (no diagonal mullions or muntins internal to the panel). Trapped panels are still possible. All 175CW grid-cores use a thermally-broken I-beam (TBI). The thermal break is approximately 3/4" (19mm) wide and utilizes our low conductive FRP as the web material.

Our 3D simulation software uses daylight modelling to customize a solution for your unique needs. You'll receive the museum-quality daylighting™ you expect—whether your project is a retrofit or you're thinking ahead to a future-fit solution.



KALWALL TRANSLUCENT GLAZING UNIT (TIGU)

1. KALWALL 175CW (TIGU) Standard Thickness: 1-3/4" (44mm)
2. Triple-pane Insulated Glass Unit (IGU) Standard Thickness: 1-3/4" (44mm)
3. Aluminum Curtain Wall Mullion (by others)



The Shoji-reverse grid pattern, one of the various patterns available.

TECH SPECS

KALWALL 175CW TIGUs are lightweight at less than 1½ lbs/ft² (7.3 kg/m²), strong and highly impact resistant ensuring you receive the exceptional quality for which Kalwall is renowned.

- TIGUs for façade applications are available up to 5x15 ft (1500mmx 4500mm).
- Three U-factors are available: 1.59, 0.91 and 0.79 W/m²K options.
- Standard grid patterns include Shoji-reverse and Ladder. Shoji, VertiKal™, Tuckerman and other orthogonal grid patterns are also available.
- NFRC 100, 201 and 202 values available for all Crystal-White exterior/interior facesheet combinations and all four exterior cloud series Kal-tints™ (Cumulus, Cirrus, Nimbus, Stratus) with Crystal-White interior faces.
- Up to ten-year warranty on abnormal colour change, fiberbloom and KWS coating.



Photos top: Kalwall 175CW was specifically developed for seamless compatibility with third-party curtain wall systems. (Fermilab SBN Near & Far Detectors | Batavia, IL | Holabird & Root. Photos: James Steinkamp).

Photos bottom: Mix and match Kalwall 175CW with double- or triple-glazed units, spandrels and other claddings to create bright, comfortable spaces without sacrificing daylight autonomy. (Bottom left: Structura UK, Ltd. Photo: Behind the Lens Media Ltd. Bottom right: Walthamstow Mall. Photo: Alex Upton.)

ADVANTAGES OF KALWALL VS. GLASS: (TIGU VS IGU)

- Daylight quality / glare-free / no secondary sun control requirements
- Higher glazing performance (U-factors and SHGC)
- Mixed glazing ease (spec'ing translucent above & below the 'vision zone')
- A fraction of the weight compared to double and, especially, triple-pane IGU
- Cost advantage against triple-pane (material \$/m² and labour requirements/time)
- Privacy, safety & security, shatterproof, vandal-resistant, low maintenance
- Bird-friendly glazing (best rating possible) by the American Bird Conservancy
- Lower embodied carbon (GWP) – EPD for 'panel only' in process now
- No light pollution contribution – Dark Skies compliant glazing

Third-party curtain wall integration. High-performance glazing. The ability to mix and match translucency and vision glazing within the same framing system for the perfect balance of privacy and vision wherever you need it. Promoting human-centred design has never been easier. KALWALL 175CW, your versatile daylighting solution. Always a perfect fit.

Find out more: <https://www.kalwall.com/products/facades/175cw-translucent-glazing/>

